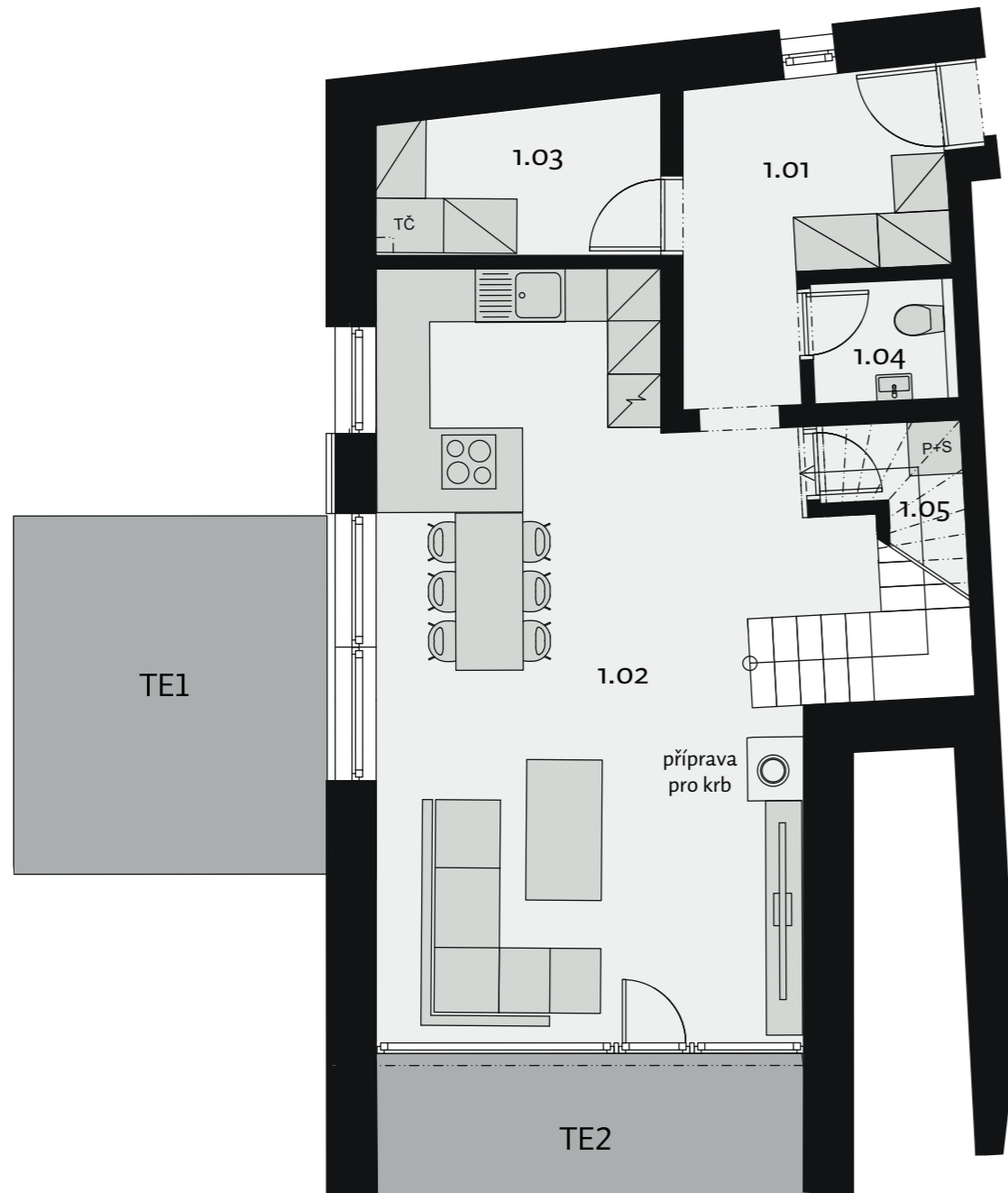


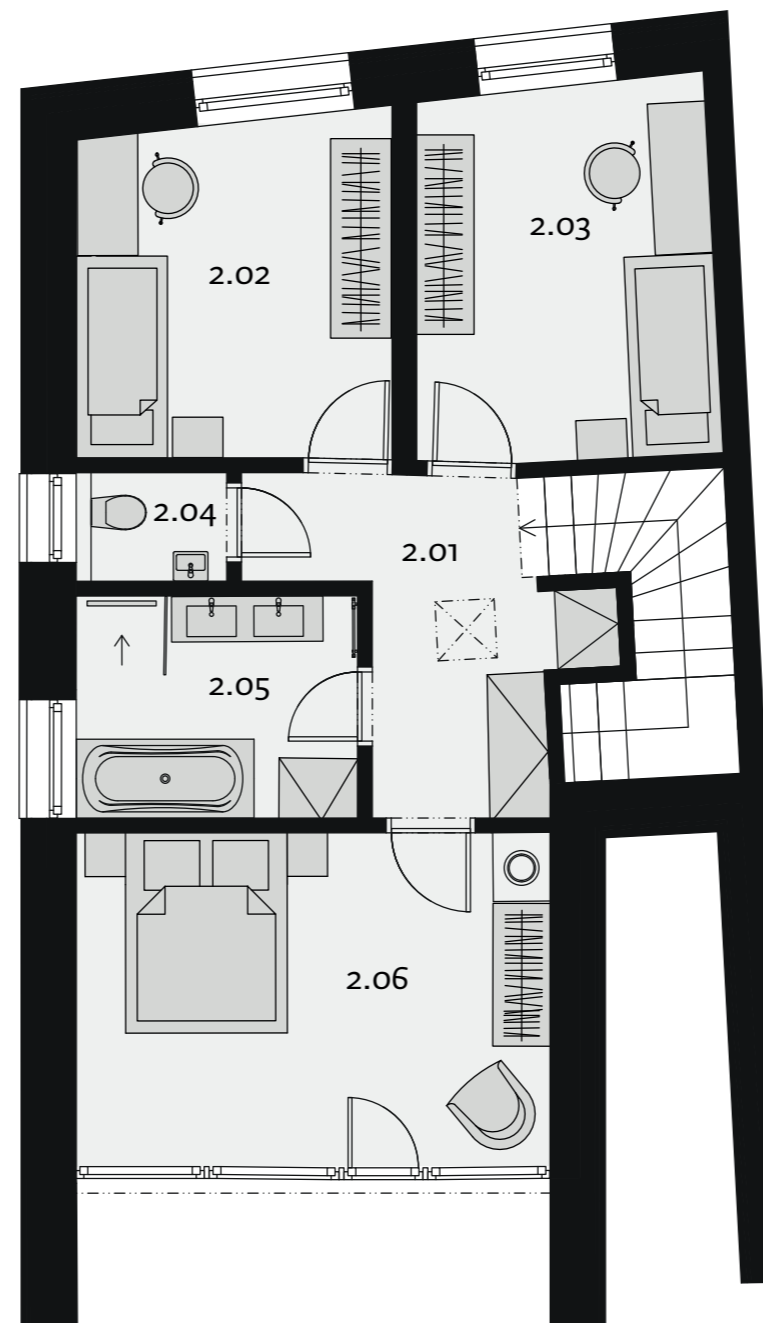
# 5C

4+kk/118,45 m<sup>2</sup>

1.NP



2.NP



**1.NP**

|      |                    |                      |
|------|--------------------|----------------------|
| 1.01 | zádveří            | 8,37 m <sup>2</sup>  |
| 1.02 | obývací pokoj + KK | 39,22 m <sup>2</sup> |
| 1.03 | tech. místnost     | 5,24 m <sup>2</sup>  |
| 1.04 | wc                 | 2,16 m <sup>2</sup>  |
| 1.05 | komora             | 4,71 m <sup>2</sup>  |

**2.NP:**

|      |          |                      |
|------|----------|----------------------|
| 2.01 | chodba   | 7,90 m <sup>2</sup>  |
| 2.02 | pokoj    | 10,90 m <sup>2</sup> |
| 2.03 | pokoj    | 11,36 m <sup>2</sup> |
| 2.04 | wc       | 1,67 m <sup>2</sup>  |
| 2.05 | koupelna | 6,41 m <sup>2</sup>  |
| 2.06 | ložnice  | 16,82 m <sup>2</sup> |

**Užitná plocha domu 114,76 m<sup>2</sup>**

**Prodejní plocha domu dle NOZ\* 118,45 m<sup>2</sup>**

**Plocha zahrady 333,62 m<sup>2</sup>**

TE1 terasa 14,00 m<sup>2</sup>

TE2 terasa 8,04 m<sup>2</sup>

Schéma domu:

Situace projektu:

